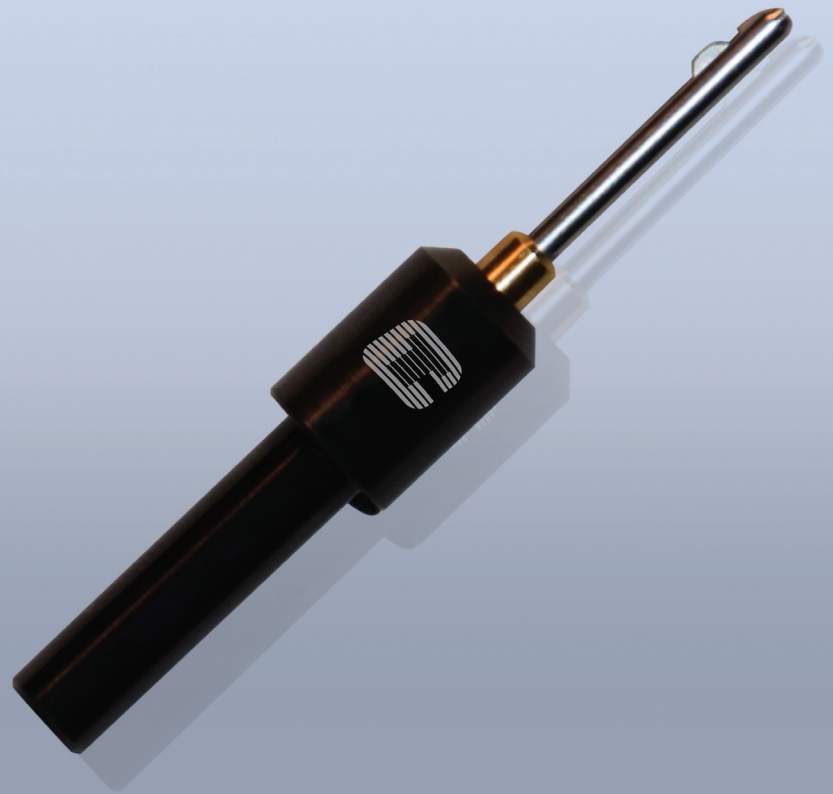




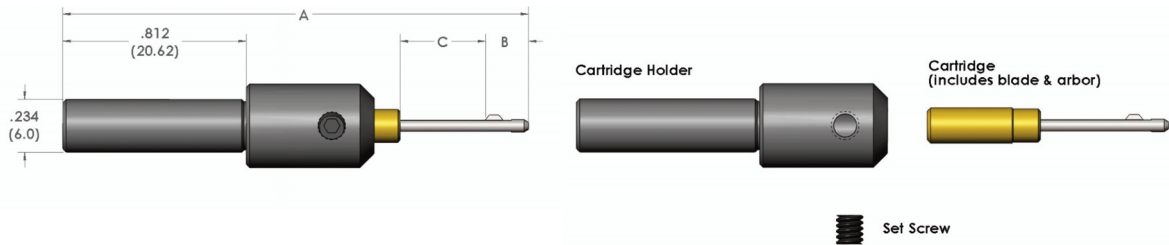
Micro Burraway Series

■ For hole sizes
.040" - .092" (1.00 - 2.33 MM)

Deburring



COGSDILL Micro Burraway Series



For hole sizes .040" - .092" (1.00 - 2.33 MM)

CTP # CARTRIDGE	HOLE RANGE (INCHES)	HOLE RANGE (METRIC)	A (INCHES)	B (INCHES)	C (INCHES)
CMB-1.00	.0400 - .0410	1.00 - 1.06	1.90	0.15	0.25
CMB-1.10	.0420 - .0440	1.07 - 1.13			
CMB-1.18	.0450 - .0480	1.14 - 1.22			
CMB-1.27	.0485 - .0510	1.23 - 1.31	1.97	0.16	0.31
CMB-1.34	.0520 - .0530	1.32 - 1.36			
CMB-1.40	.0540 - .0560	1.37 - 1.44			
CMB-1.50	.0570 - .0610	1.45 - 1.55	2.06	0.19	0.38
CMB-1.60	.0615 - .0650	1.56 - 1.65	2.10		0.41
CMB-1.70	.0655 - .0680	1.66 - 1.74	2.13		0.44
CMB-1.78	.0690 - .0710	1.75 - 1.82	2.21	0.21	0.50
CMB-1.86	.0720 - .0740	1.83 - 1.89			
CMB-1.93	.0750 - .0770	1.90 - 1.97			
CMB-2.00	.0780 - .0800	1.98 - 2.00	2.24	0.24	0.50
CMB-2.07	.0805 - .0830	2.04 - 2.10			
CMB-2.17	.0840 - .0870	2.13 - 2.20			
CMB-2.28	.0880 - .0920	2.23 - 2.34			
CMB-HOLDER	HOLDER FOR ALL CMB SERIES: WITH .234 (6.0MM) X .812 (20.62MM) SHANK				

All cartridges must be used with cartridge holder (Part # CMB-HOLDER) shown above.
 All CMB Series cartridges will have a double acting blade for deburring both sides of a hole.
 For back acting only CMB cartridges, please add "-R" to the cartridge number.

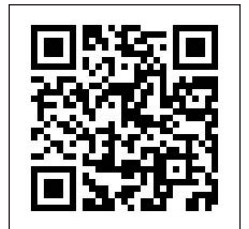
COGSDILL TOOL PRODUCTS, INC.

Mailing Address

P.O. Box 7007
 Camden, SC USA 29021-7007
 Ph. (803) 438-4000
 Fax (803) 438-5263
 www.cogsdill.com
 cogsdill@cogsdill.com

COGSDILL-NUNEATON LIMITED

St George's Way
 Bermuda Industrial Estate
 Nuneaton, Warwickshire, CV10 7JS, UK
 Ph. +44 (0) 2476 383792
 Fax +44 (0) 2476 344433
 www.cogsdill.co.uk
 sales@cogsdill.co.uk



Shipping Address

1001 Guion Drive
 Lugoff, SC 29078

Visit us online

www.cogsdill.com

BROCHURE NO. 100-A 03-18