

Codice Articolo

FN



NEUTRO

Tol

2A

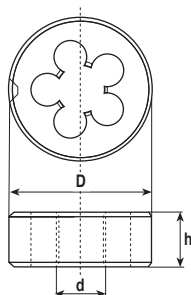
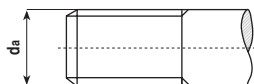
Mat

HSS

da	mm	d x p	D	h	N	
1.79	1.854	Nr 1 - 64	16	5	5	46,95
2.12	2.184	Nr 2 - 56	16	5	5	44,14
2.44	2.515	Nr 3 - 48	16	5	5	42,72
2.76	2.845	Nr 4 - 40	16	5	5	35,21
			20	5	5	35,21
3.09	3.175	Nr 5 - 40	20	5	5	35,21
3.41	3.505	Nr 6 - 32	20	5	5	35,21
4.07	4.166	Nr 8 - 32	20	5	5	35,21
4.71	4.826	Nr 10 - 24	20	7	7	35,21
5.37	5.486	Nr 12 - 24	20	7	7	35,21
6.22	6.35	NC 1/4 - 20	20	7	7	32,54
			25	9	9	
7.80	7.94	NC 5/16 - 18	25	9	9	34,94
9.37	9.53	NC 3/8 - 16	30	11	11	42,89
10.95	11.11	NC 7/16 - 14	30	11	11	42,89
12.52	12.70	NC 1/2 - 13	38	14	14	51,65
14.10	14.29	NC 9/16 - 12	38	14	14	55,17
15.68	15.88	NC 5/8 - 11	45	18	18	68,09
18.84	19.05	NC 3/4 - 10	45	18	18	70,43
22	22.23	NC 7/8 - 9	50	18	18	
			55	22	22	96,25
25.16	25.40	NC 1' - 8	55	22	22	99,78
28.31	28.58	NC 1' 1/8 - 7	65	25	25	147,90
31.49	31.75	NC 1' 1/4 - 7	65	25	25	147,90
34.63	34.93	NC 1' 3/8 - 6	65	25	25	164,34
37.80	38.10	NC 1' 1/2 - 6	75	30	30	234,77
44.12	44.45	NC 1' 3/4 - 5	90	36	36	
50.45	50.80	NC 2' - 4 1/2	90	36	36	

Codice Articolo

FN



Tol
Mat

NEUTRO

2A

HSS

da	mm	d x p	D	h	N
2.12	2.184	Nr 2 - 64	16	5	44,14
2.44	2.515	Nr 3 - 56	16	5	42,96
2.77	2.845	Nr 4 - 48	16	5	36,39
3.10	3.175	Nr 5 - 44	20	5	36,39
3.42	3.505	Nr 6 - 40	20	5	36,39
4.08	4.166	Nr 8 - 36	20	5	36,39
4.73	4.826	Nr 10 - 32	20	7	33,33
5.38	5.486	Nr 12 - 28	20	7	34,94
6.25	6.35	NF 1/4 - 28	20	7	33,33
			25	9	35,73
7.82	7.94	NF 5/16 - 24	25	9	34,94
9.41	9.53	NF 3/8 - 24	30	11	42,26
			38	10	
10.98	11.11	NF 7/16 - 20	30	11	42,96
			38	10	
12.56	12.70	NF 1/2 - 20	38	10	50,47
14.14	14.29	NF 9/16 - 18	38	14	52,59
15.73	15.88	NF 5/8 - 18	38	14	71,48
			45	14	68,09
18.89	19.05	NF 3/4 - 16	45	14	69,89
22.05	22.23	NF 7/8 - 14	50	14	93,69
			55	16	93,69
25.21	25.40	NF 1' - 12	55	16	97,69
28.38	28.58	NF 1' 1/8 - 12	65	18	145,56
31.55	31.75	NF 1' 1/4 - 12	65	18	145,56
34.73	34.93	NF 1' 3/8 - 12	65	18	157,29
37.90	38.10	NF 1' 1/2 - 12	75	20	222,40