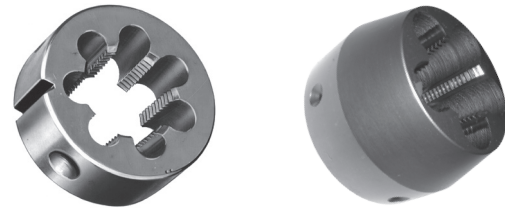


Codice Articolo

FN	FN	FNOT	FCAM	FCOT
----	----	------	------	------



Tol	NEUTRO	NEUTRO	NEUTRO	NEUTRO	NEUTRO
	A	-0.1 / -0.2	A	A	A
Mat	HSS	HSS	HSS	HSS	HSS

da	mm	d x p	D	N	Cam		OTTONE	OTTONE			
9.58	9.73	G 1/8 - 28	25	9		54,70					
			30	11		45,08		68,09			
			38	10	24	45,08	67,61	83,34			
13.01	13.16	G 1/4 - 19	25	9		59,86					
			30	11	18	54,93		105,64			
			38	10	24	45,08	67,61	72,77	84,52		
16.51	16.66	G 3/8 - 19	30	11	18	70,43		115,03			
			38	14	24	53,99	79,82	83,34	95,86		
			45	14		61,15					
20.8	20.95	G 1/2 - 14	38	14	24	55,17	81,00	86,86	99,89		
			45	14	28.5	61,15		98,60	113,39		
			50	14	32	75,13					
22.77	22.91	G 5/8 - 14	50	14		91,57					
			55	16		91,57					
			45	14		110,35		190,16	218,69		
26.26	26.44	G 3/4 - 14	50	14	32	86,86	129,12	147,90	170,09		
			55	16		101,64					
			65	18		133,83					
30.02	30.20	G 7/8 - 14	65	18		133,83					
			33.07	33.25	G 1' - 11	50	18	32		167,86	203,08
			65			18		127,95			
37.72	37.90	G 1' 1/8 - 11	65	18		199,55					
			75	20		199,55					
			65	18		197,21					
41.73	41.91	G 1' 1/4 - 11	75	20		189,06					
			90	22		305,20					
			44.14	44.32	G 1' 3/8 - 11	75	20		291,12		
47.62	47.80	G 1' 1/2 - 11	90			22		274,69			
53.57			53.75	G 1' 3/4 - 11	90	22		289,76			
59.43	59.61	G 2' - 11			90	22		363,89			
105			22		346,31						
65.53	65.71	G 2' 1/4 - 11	105	22		434,32					
			75	75.18	G 2' 1/2 - 11	105	22		446,07		
	87.7	87.88	G 3' - 11			140	25		635,39		