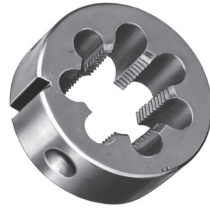


Codice Articolo

FN

FK



Codice Articolo

FCAM

FKCAM

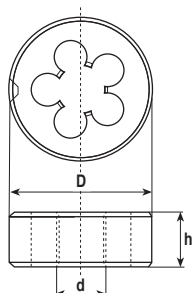
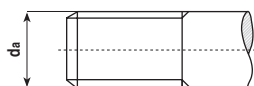


	NEUTRO	NEUTRO
Tol	6G	6G
Mat	HSS	HSSCo-PM

	NEUTRO	NEUTRO
Tol	6G	6G
Mat	HSS	HSSCo-PM

da	d x p	D	h			
			N	CAM		
0.97	M 1 x 0.25	16	5		55,62	
1.17	M 1.2 x 0.25	16	5		52,40	
1.36	M 1.4 x 0.3	16	5		44,49	
1.54	M 1.6 x 0.35	16	5		42,89	
	M 1.7 x 0.35	16	5		42,89	
1.74	M 1.8 x 0.35	16	5		42,89	
1.94	M 2 x 0.4	16	5		39,75	
		20	5		33,33	
2.13	M 2.2 x 0.45	16	5		39,75	
		20	5		33,33	
2.24	M 2.3 x 0.4	16	5		39,75	
		20	5		32,07	
2.43	M 2.5 x 0.45	16	5		39,75	
2.53	M 2.6 x 0.45	16	5		39,75	
		20	5		30,94	
2.92	M 3 x 0.5	16	5	9	35,21	
		20	5	11	27,47	
		25	5		35,21	
3.41	M 3.5 x 0.6	20	5		29,81	
3.90	M 4 x 0.7	16	5	9	35,21	
		20	5	11	26,74	
		25	7		35,21	
4.40	M 4.5 x 0.75	20	7		33,62	
4.90	M 5 x 0.8	16		9		
		20	7	11	25,22	
		25	7		33,62	
5.40	M 5.5 x 0.9	20	7		42,89	
5.88	M 6 x 1	20	7	11	25,40	
		25	9		33,62	
6.88	M 7 x 1	20	7		35,88	
		25	9		31,74	
7.97	M 8 x 1.25	25	9	14.5	28,29	
		30	11		42,07	
		38	10		46,08	

da	d x p	D	h			
			N	CAM		
0.97	M 1 x 0.25	16				
1.17	M 1.2 x 0.25	16				
1.36	M 1.4 x 0.3	16				
1.54	M 1.6 x 0.35	16				
	M 1.7 x 0.35	16				
1.74	M 1.8 x 0.35	16				
1.94	M 2 x 0.4	16				
		20				
2.13	M 2.2 x 0.45	16				
		20				
2.24	M 2.3 x 0.4	16				
		20				
2.43	M 2.5 x 0.45	16				
2.53	M 2.6 x 0.45	16				
		20				
2.92	M 3 x 0.5	16		9	43,70	
		20		11	44,60	
		25				
3.41	M 3.5 x 0.6	20				
3.90	M 4 x 0.7	16		9	43,70	
		20		11	43,70	
		25				
4.40	M 4.5 x 0.75	20				
4.90	M 5 x 0.8	16		9	43,70	
		20		11	43,70	
		25				
5.40	M 5.5 x 0.9	20				
5.88	M 6 x 1	20		11	43,70	
		25				
6.88	M 7 x 1	20				
		25				
7.97	M 8 x 1.25	25		14.5	51,65	
		30				
		38				



Codice Articolo

FN	FK
----	----



Codice Articolo

FCAM	FKCAM
------	-------



	NEUTRO	NEUTRO
Tol	6G	6G
Mat	HSS	HSSCo-PM

	NEUTRO	NEUTRO
Tol	6G	6G
Mat	HSS	HSSCo-PM

da	d x p	D	h		
			N	CAM	
8.86	M 9 x 1.25	25	9		37,39
9.85	M 10 x 1.5	25	9	14.5	45,78
		30	11		34,88
		38	10		44,60
10.85	M 11 x 1.5	30	11		47,68
		38	10		61,98
11.83	M 12 x 1.75	38	14		44,27
13.82	M 14 x 2	38	14		45,80
15.82	M 16 x 2	38	14		72,77
		45	18		60,36
17.79	M 18 x 2.5	38	14		
		45	18		62,22
19.79	M 20 x 2.5	38	14		
		45	18		62,22
		50	18		
21.79	M 22 x 2.5	55	22		90,39
23.76	M 24 x 3	55	22		88,63
26.76	M 27 x 3	65	25		129,83
29.73	M 30 x 3.5	65	25		129,83
32.73	M 33 x 3.5	65	25		137,44
35.70	M 36 x 4	65	25		137,44
38.70	M 39 x 4	75	30		218,33
41.68	M 42 x 4.5	75	30		225,38
44.93	M 45 x 4.5	90	36		333,38
47.92	M 48 x 5	90	36		333,38
51.29	M 52 x 5	90	36		352,16

da	d x p	D	h		
			N	CAM	
8.86	M 9 x 1.25	25			
9.85	M 10 x 1.5	25		14.5	68,09
		30			
		38			
10.85	M 11 x 1.5	30			
		38			
11.83	M 12 x 1.75	38			84,52
13.82	M 14 x 2	38			
15.82	M 16 x 2	38			
		45			
17.79	M 18 x 2.5	38			
		45			
19.79	M 20 x 2.5	38			
		45			
		50			
21.79	M 22 x 2.5	55			
23.76	M 24 x 3	55			
26.76	M 27 x 3	65			
29.73	M 30 x 3.5	65			
32.73	M 33 x 3.5	65			
35.70	M 36 x 4	65			
38.70	M 39 x 4	75			
41.68	M 42 x 4.5	75			
44.93	M 45 x 4.5	90			
47.92	M 48 x 5	90			
51.29	M 52 x 5	60			